

CYPRUS
IN
FIGURES

2001

2002

2003

2004

2005

2006

2007 EDITION



MARFIN LAIKI

INDEX

DEMOGRAPHICS	4
SELECTED ANNUAL GROWTH RATES	5
NATIONAL ACCOUNTS	6
AGRICULTURE	7
MANUFACTURING	8
ENERGY	8
CONSTRUCTION	9
TOURISM	9
FOREIGN TRADE	10
BALANCE OF PAYMENTS	12
FOREIGN EXCHANGE RATES	13
FISCAL ACCOUNTS	13
PUBLIC DEBT	14
MONETARY DATA	14
LABOUR MARKET	15
WAGES & PRICES	15
CYPRUS STOCK EXCHANGE INDICES	17
IMPORTANT ADDRESSES & TELEPHONES	19

	2003	2004	2005	2006
DEMOGRAPHICS				
Population-total (end year) (000's)	818,2	837,3	854,3	867,6
Annual end-year population growth rate (%)	2,0	2,3	2,0	1,6
Population in government controlled areas (000's)	730,4	749,2	766,4	778,7
Birth rate (per 1000 population)	11,2	11,3	10,9	11,3
Death rate (per 1000 population)	7,2	7,1	7,2	6,7
Infant mortality rate (per 1000 live births)	4,1	3,5	4,6	3,1
Natural increase rate (per 1000 population)	4,0	4,2	3,7	4,6
Net migration (No.)	12,3	15,7	14,4	8,7
Persons aged 65+ as percent of population (%)	11,9	11,9	12,1	12,3
Dependency ratio ⁽¹⁾ (%)	46,9	45,2	43,8	43,3
Life expectancy at birth (years)	2002/03		2004/05	
Males	77,0		77,0	
Females	81,4		81,7	
Population in urban areas (%)	69,3	69,4	69,6	69,7

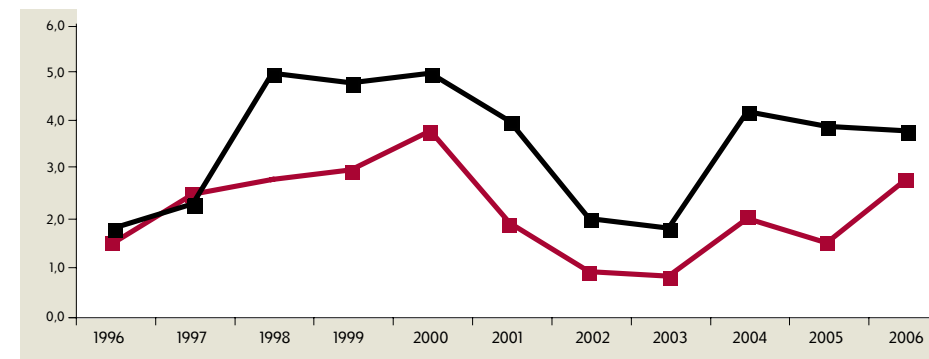
(1) Ratio of persons aged 0-14 and 65+ to persons aged 15-64.

	2003	2004	2005	2006*
SELECTED ANNUAL GROWTH RATES				
GDP at current prices	7,0	7,6	6,4	6,4
GDP at constant prices	1,8	4,2	3,9	3,8
GNP per capita at current prices	6,6	3,3	4,2	5,7
Private final consumption	2,0	6,3	4,7	4,0
Government final consumption	6,0	-5,5	3,4	2,4
Total investment	-3,8	20,1	-2,6	4,3
Total liquidity (M2)	4,0	5,6	10,4	14,5
Consumer price index	4,1	2,3	2,6	2,5
Productivity (% increase in real productivity)	-0,5	0,9	1,7	1,9
Average rates of pay in real terms	2,0	1,9	2,7	3,1

* Provisional figures.

REAL GDP GROWTH RATE

■ CYPRUS ■ EURO AREA

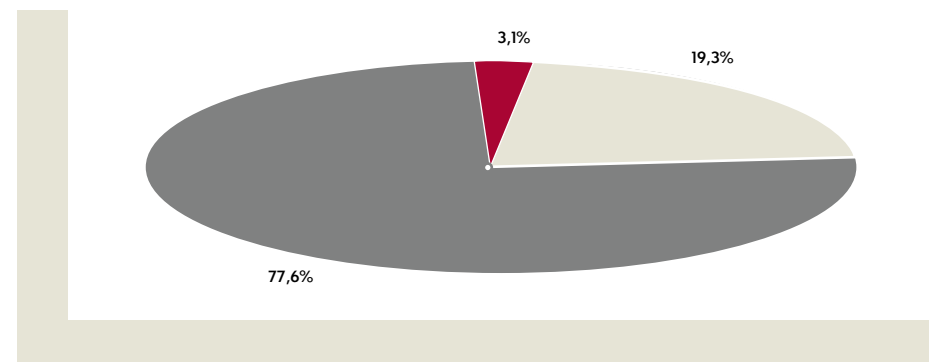


	2003	2004	2005	2006*
NATIONAL ACCOUNTS (In millions of C£) (current market prices)				
Gross domestic product by economic activity				
Agriculture, hunting & forestry, fishing	211,3	197,7	203,8	211,1
Mining and quarrying	20,3	24,0	25,0	24,0
Manufacturing	572,2	614,9	634,5	637,1
Electricity, gas and water supply	139,7	145,3	155,8	174,8
Construction	474,0	531,8	586,0	629,7
Wholesale and retail trade	740,8	838,5	873,0	937,8
Restuarants and hotels	490,9	501,0	515,9	530,5
Transport, storage and communication	503,1	546,4	576,5	590,4
Financial intermeditation	384,5	443,6	490,6	551,6
Real estate, renting and business activites	1.092,3	1.174,7	1.247,6	1.326,6
Public administration and defence	666,8	690,4	740,7	786,6
Education	374,4	388,4	419,7	447,5
Health and social work	244,7	256,1	272,1	284,7
Other community social and personal services	250,0	260,7	270,8	280,9
Private households with employed persons	44,0	51,2	56,5	61,5
Total gross value added	6.209,0	6.664,7	7.068,5	7.474,8
Plus: Import duties and VAT	656,9	725,2	793,2	887,0
Gross domestic product	6.865,9	7.389,9	7.861,7	8.361,8
Gross domestic product by category of expenditure				
Government final consumption	1.359,3	1.319,9	1.420,5	1.496,8
Private final consumption	4.394,4	4.757,8	5.116,1	5.459,6
Gross fixed capital formation	1.209,8	1.385,6	1.486,9	1.610,4
Increase in stocks	-12,2	108,4	39,5	30,1
Exports of goods and services	3.233,0	3.538,7	3.808,0	3.947,5
Less: Imports of goods and services	3.318,3	3.720,6	4.009,4	4.182,7
Gross Domestic product at current prices	6.866,0	7.389,8	7.861,6	8.361,7
Plus: Net factor income from the rest of the world	-152,4	-297,3	-258,8	-254,4
Gross national product at current prices	6.713,6	7.092,5	7.602,8	8.107,3
Gross domestic product at constant 2000 prices	6.245,8	6.506,8	6.759,4	7.015,4

	2003	2004	2005	2006*
AGRICULTURE (In millions of C£) (current market prices)				
Gross agricultural output				
Crop and livestock	342,6	345,6	340,6	336,8
Crop production	170,4	165,6	165,3	167,6
of which: Barley	19,1	9,6	5,0	55,6
Potatoes	18,5	18,4	27,4	26,2
Grapes	13,1	12,7	5,8	5,1
Oranges	5,8	6,6	9,1	9,5
Olives	9,6	10,2	9,4	11,3
Livestock production	172,3	180,0	175,2	169,2
Hunting	9,9	5,6	9,2	9,2
Ancillary production	23,6	19,5	22,2	21,2
of which: Milk and grape products	19,0	15,3	17,7	17,1
Other	-1,7	1,0	-4,9	2,5
Total gross agricultural output	374,4	371,7	367,1	369,6
Fishing gross output	14,6	24,0	23,9	24,1

DISTRIBUTION OF GROSS DOMESTIC PRODUCT BY SECTOR, 2006

■ PRIMARY SECTOR ■ SECONDARY SECTOR ■ TERTIARY SECTOR



	2003	2004	2005	2006*
MANUFACTURING (In millions of C£) (current market prices)				
Gross manufacturing output				
Food products, beverages and tobacco	667,7	711,6	733,2	687,9
Textiles and textile products	60,3	51,3	47,7	48,5
Leather and leather products	9,2	6,7	7,1	6,4
Wood and wood products	93,4	105,7	107,5	109,9
Pulp, paper and paper products publishing and printing	116,0	121,9	121,6	130,4
Refined petroleum products ⁽²⁾	120,4	38,3		
Chemicals, chemical products and man-made fibres	88,3	97,9	96,8	104,4
Rubber and plastic products	41,7	44,4	48,7	49,3
Other non-metallic mineral products	208,9	255,0	286,2	301,4
Basic metals and fabricated metal products	145,9	179,4	188,3	201,3
Machinery and equipment N.E.C.	40,8	43,2	41,1	42,0
Electrical and optical equipment	19,9	24,0	27,3	40,4
Transport equipment	17,4	13,5	12,8	13,6
Manufacturing N.E.C.	79,7	83,8	83,2	90,9
Cottage industry	1,3	1,3	0,9	0,8
Total gross manufacturing output	1.711,0	1.777,9	1.802,3	1.827,0

(2) Data for refined petroleum products regarding the years 2005 and 2006 are included in chemicals, chemical products and man-made fibres.

ENERGY

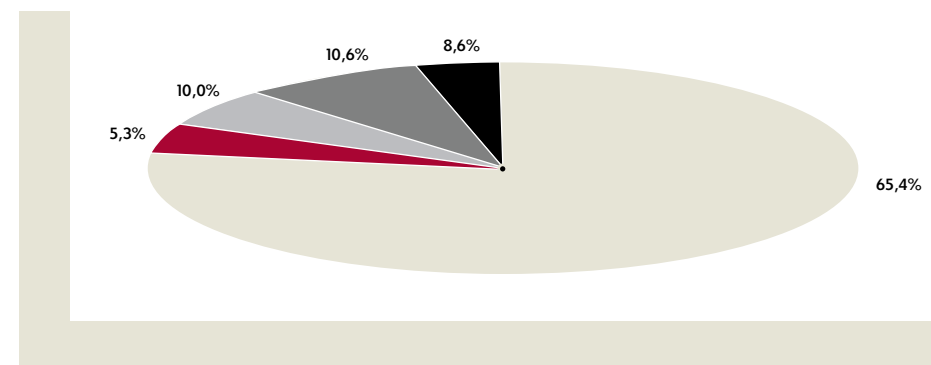
	2003	2004	2005	2006
Petroleum products (000's tonnes)				
Production of petroleum products ⁽³⁾	931,9	269,2	0,0	0,0
Sales of petroleum products	2.108,2	2.018,8	2.442,5	2.401,4
Electricity (000's kWh)				
Gross production of electricity	4.043,7	4.176,1	4.347,9	4.618,1
Consumption of electricity	3.656,0	3.729,3	3.930,7	4.135,0

(3) The Refinery seized production operations in April 2004.

	2003	2004	2005	2006
CONSTRUCTION (Annual changes in %)				
Price index of construction materials	4,6	8,2	5,5	5,0
Building permits authorised in square metres	18,9	16,4	13,3	2,6
Labour cost index	5,8	4,0	5,2	5,3
Local sales of cement (tonnes)	10,1	18,0	3,4	2,4
TOURISM				
Tourist arrivals (long-stay visitors) 000's persons	2.303,2	2.349,0	2.470,1	2.400,9
of which from: United Kingdom	1.347,0	1.332,9	1.391,8	1.360,1
Greece	110,2	133,4	130,2	126,8
Germany	129,0	161,6	182,7	152,9
Scandinavian countries	200,4	196,6	195,2	203,2
Russia	105,0	83,8	97,6	114,8
Hotel capacity-including apartments (thousand beds)	95,2	96,5	95,6	94,0
Gross occupancy rates (%)	41,8	41,9	43,1	42,1
Earnings from tourism (£mn)	1.015,0	982,3	1.005,7	1.027,3
Cypriot residents expenditure abroad (£mn)	315,1	378,8	432,8	449,5*

DISTRIBUTION OF IMPORTS BY AREA, 2006

EUROPEAN UNION
 OTHER EUROPE
 NEAR AND MIDDLE EASTERN COUNTRIES
 OTHER ASIAN COUNTRIES
 OTHER COUNTRIES



	2003	2004	2005	2006
FOREIGN TRADE (In millions of C€)				
Total imports (c.i.f.)	2.304,0	2.679,3	2.966,8	3.226,9
Total exports	476,8	548,0	719,1	650,7
of which: Domestic exports (incl. stores & provisions)	215,0	242,9	238,1	261,4
Re-exports (incl. stores & provisions)	261,8	305,1	481,0	389,3
Crude trade balance	-1.827,2	-2.131,3	-2.247,7	-2.576,2

Imports (c.i.f.) by area

European Union	1.287,0	1.735,3	1.953,6	2.111,7
Other Europe	189,5	159,5	142,0	171,0
Near and Middle Eastern countries	n.a.	208,6	303,6	323,0
Other Asian countries	n.a.	375,4	334,2	342,9
of which: Japan	129,9	127,4	91,0	78,1
Other countries	827,5	200,5	233,4	278,3
of which: USA	96,2	61,6	47,8	50,9

Imports for home consumption by economic destination

Consumer goods	639,2	743,4	788,4	878,9
Intermediate inputs	717,1	802,1	789,8	882,5
Capital goods	257,1	269,7	260,6	290,5
Transport equipment and parts thereof	228,5	331,2	302,0	360,3
Fuels and lubricants	162,5	295,8	403,1	490,1
Unclassified	92,1	33,8	47,1	42,1
Total	2.096,5	2.476,2	2.591,0	2.944,5

Domestic exports (f.o.b.) (incl. stores & provisions) by destination

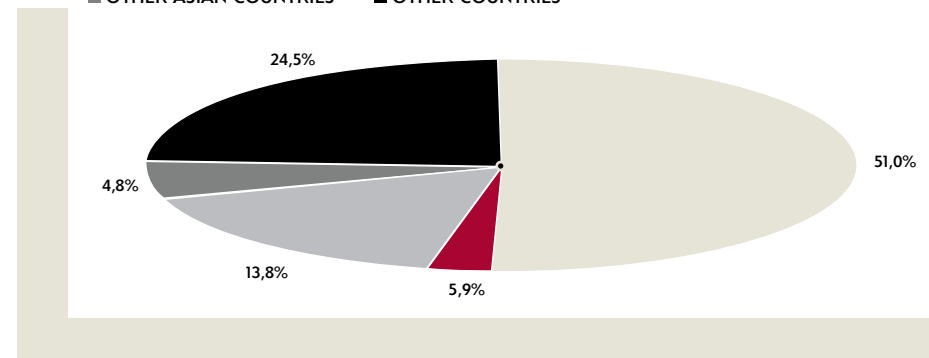
European Union	278,5	323,2	415,9	331,6
Other European countries	24,9	36,3	36,0	38,7
Near and Middle Eastern countries	65,1	79,8	77,4	89,6
Other Asian countries	15,8	28,9	34,2	31,3
of which: Japan	1,1	10,8	10,8	7,3
Other countries	92,5	79,9	155,6	159,4
of which: USA	4,4	9,0	10,5	4,8

n.a.: non available

	2003	2004	2005	2006
Domestic exports (f.o.b.) (excl. stores and provisions) by economic sector				
Agricultural products (raw)	43,6	57,4	54,7	55,2
of which: Potatoes	15,1	16,0	11,9	23,3
Citrus fruit	19,0	22,3	20,7	19,1
Minerals	3,1	3,0	3,1	6,3
Industrial products	159,4	179,2	179,7	199,2
Industrial products of agricultural origin	32,7	34,1	42,5	42,3
of which: Halloumi cheese	10,4	11,2	15,2	17,0
Industrial products of mineral origin	6,7	5,5	3,4	4,3
Industrial products of manufacturing origin	120,0	139,6	133,8	152,6
of which: Cigarettes	6,8	11,9	7,9	4,1
Cement	9,1	3,3	4,8	5,0
Pharmaceutical products	38,7	49,6	50,4	53,8
Articles of paper or paperboard	5,6	5,2	4,5	5,7
Clothing	9,8	7,7	4,5	4,2
Footwear	1,4	0,9	0,5	0,6
Aluminium bars, rods and profiles	3,2	3,9	4,0	7,1
Furniture	4,2	4,2	4,8	3,5
Unclassified	0,0	0,2	0,3	0,1

DISTRIBUTION OF DOMESTIC EXPORTS BY DESTINATION, 2006

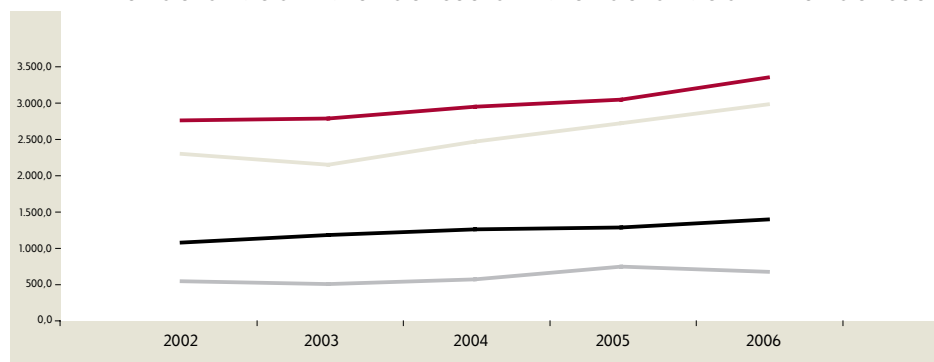
EUROPEAN UNION
 OTHER EUROPE
 NEAR AND MIDDLE EASTERN COUNTRIES
 OTHER ASIAN COUNTRIES
 OTHER COUNTRIES



	2003	2004	2005	2006*
BALANCE OF PAYMENTS (In millions of C£)				
Current account	-153,6	-368,7	-461,0	-496,5
Exports of goods	478,4	548,7	719,2	650,8
Imports of goods (f.o.b)	-2.120,5	-2.441,6	-2.692,7	-2.952,0
Services credit	2.762,2	2.925,1	3.021,7	3.326,6
of which: Travel	1.081,7	1.055,5	1.081,7	1.101,5
Services debit	-1.153,1	-1.235,9	-1.256,7	-1.367,9
of which: Travel	-315,1	-378,8	-432,8	-449,5
Income	-194,4	-244,0	-294,6	-250,9
Current transfers	73,8	79,0	42,1	96,9
Capital and financial account	142,8	304,6	381,9	580,6
Capital account	19,4	62,9	40,4	15,1
Financial account	123,4	241,7	341,5	565,5
of which: Direct investment	165,7	186,0	291,5	297,7
- Abroad	-296,6	-325,0	-258,9	-392,5
- In Cyprus	462,3	511,0	550,4	690,2
Official reserve assets	111,2	-179,3	-333,8	-460,5
Net errors and omissions	10,8	64,1	79,2	-84,2
Reserves	1.607,3	1.749,3	2.146,2	2.606,1

BALANCE OF PAYMENTS (In millions of C£)

■ EXPORTS OF SERVICES ■ IMPORTS OF GOODS ■ IMPORTS OF SERVICES ■ EXPORTS OF GOODS



FOREIGN EXCHANGE RATES

	2003	2004	2005	2006
Pound Sterling	0,8464	0,8600	0,8458	0,8471
US Dollar	0,5175	0,4695	0,4658	0,4601
Euro	0,5859	0,5835	0,5785	0,5775
Yen (CYP per 100 yen)	0,4478	0,4344	0,4231	0,3960

FISCAL ACCOUNTS (consolidated Central Government) in C£m

	2003	2004	2005	2006*
Total revenue and grants	2.408,1	2.595,6	2.879,3	3.185,0
Revenue	2.402,8	2.518,3	2.789,8	3.091,6
Current Revenue	2.401,6	2.518,3	2.789,8	3.091,6
Tax Revenue	1.950,6	2.113,7	2.383,5	2.673,8
Direct taxes	582,0	620,0	776,9	903,6
Indirect taxes	1.046,4	1.131,2	1.224,8	1.359,3
Social security contributions	322,3	362,5	381,9	410,9
Non tax revenues	450,9	404,6	406,3	417,8
Capital revenue	1,2	0,0	0,0	0,0
Foreign grants	5,3	77,4	89,5	93,4
Total expenditure and net lending	2.824,3	2.890,9	3.064,6	3.300,1
Expenditure	2.824,3	2.890,9	3.064,6	3.300,1
Current expenditure	2.518,9	2.682,7	2.867,0	3.087,4
of which: Wages and salaries	726,8	781,6	830,2	898,9
Other goods and services	242,0	197,4	214,9	259,3
Subsidies	90,9	85,9	62,1	54,7
Interest payments	327,0	347,3	385,2	372,4
Social security payments	386,7	434,1	471,9	516,7
Social pension	36,6	28,2	29,2	29,9
Other transfers	595,4	755,9	833,8	909,3
Capital expenditure	305,3	208,3	197,6	212,7
Investment	218,8	208,3	197,6	212,7
Capital Transfers	86,6	0,0	0,0	0,0
Net lending	0,0	0,0	0,0	0,0
Fiscal deficit (-) / surplus (+) of consolidated Central Gov.	-416,2	-295,3	-185,2	-115,1
% of GDP	-6,1	-4,0	-2,4	-1,4
General Government deficit (-) / surplus (+)	-431,9	-300,1	-183,6	-128,5
% of GDP	-6,3	-4,1	-2,3	-1,5

	2003	2004	2005	2006*
PUBLIC DEBT (In millions of C£)				
Total public debt	7.359,4	7.982,1	8.489,7	8.682,6
Domestic	6.295,5	6.559,4	7.146,5	7.483,3
Short-term	3.144,4	3.179,0	3.413,0	3.528,4
Long-term	3.151,1	3.380,4	3.733,4	3.954,9
Foreign	1.063,9	1.422,7	1.343,3	1.199,3
Short-term liabilities of CB to the IMF	4,8	4,8	4,8	4,8
Long-term loans	273,4	328,9	374,2	384,4
Medium-term loans (E.M.T.N.)	674,8	974,6	964,3	810,2
Short-term loans (E.C.P.)	111,0	114,5	0,0	0,0
Net total debt (excl. intragovernmental & short-term liabilities to the Central Bank)	4.745,7	5.203,6	5.442,9	5.461,1
% of GDP	69,1	70,4	69,2	65,3
	2003	2004	2005	2006
MONETARY DATA (end period) (In millions of C£)				
Money supply (M1)	1.373,3	1.523,3	1.815,1	2.255,2
Total liquidity (M2)	8.491,1	8.964,5	9.894,6	11.326,0
Total bank credit ⁽⁴⁾	8.682,8	9.332,5	9.973,1	11.684,9
of which: Agriculture	111,6	116,9	107,3	108,5
Manufacturing	540,2	524,3	524,6	538,8
Foreign and domestic trade	1.604,8	1.561,7	1.552,8	1.519,2
Building / Construction	1.377,9	1.588,6	1.751,0	2.199,8
Tourism	849,5	878,6	849,6	909,8
Personal and professional	3.760,4	4.243,2	4.739,0	5.916,0
Total bank deposits	12.191,4	13.101,5	16.024,3	19.284,1
Local currency deposits	8.265,5	8.429,8	8.965,0	10.052,5
Foreign currency deposits	3.925,9	4.671,7	7.059,4	9.231,6
Minimum reserve requirement (%)				
Local currency deposits	6,5	6,5	5,0	5,0
Foreign currency deposits	0,0	2,0	2,0	2,0
Lombard rate (end of year)	4,50	5,50	4,25	4,50
Repo rate (end of year) ⁽⁵⁾	3,50	4,50	3,25	4,50

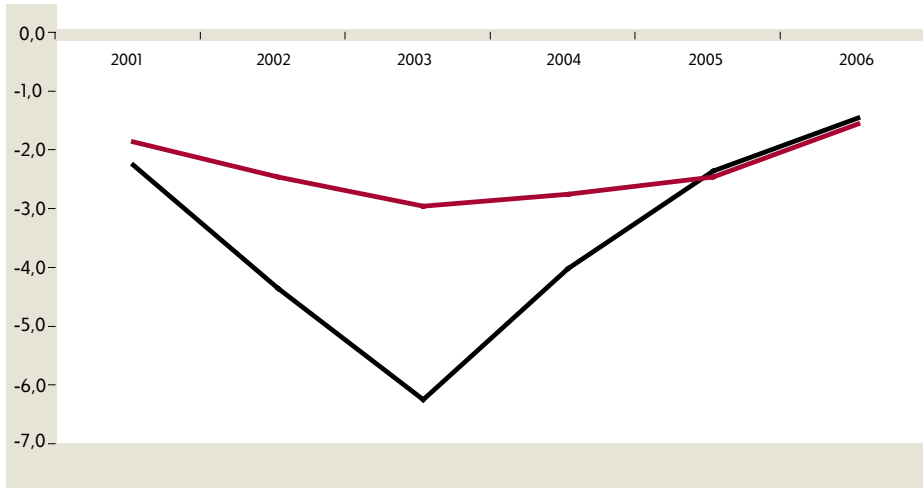
(4) Refers to all banks comprising the commercial banks and the specialised financial institutions.

(5) As from 01/09/2006 the repo rate is the basis for the pricing of loans in Cyprus pounds by the credit institutions.

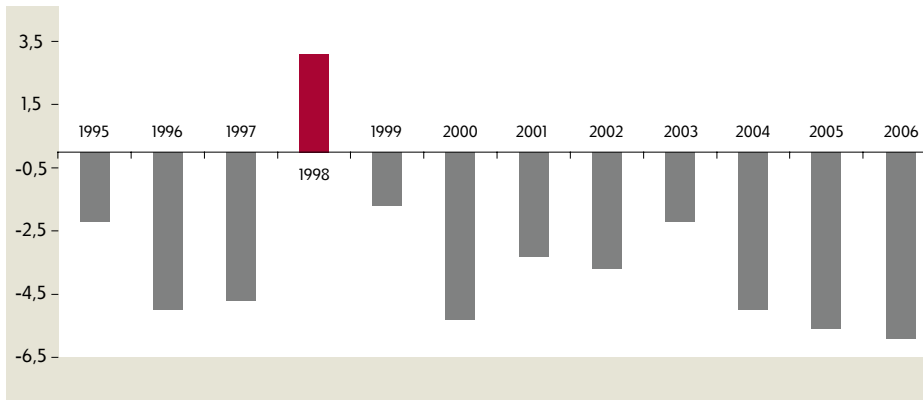
	2003	2004	2005	2006*
LABOUR MARKET (000's persons)				
Economically active population	355,6	366,6	374,3	380,4
Gainfully employed population	331,5	342,1	349,5	356,7
Primary sectors	32,9	32,8	30,9	30,4
Secondary sectors	67,9	70,1	71,4	73,0
Tertiary sectors	230,7	239,2	247,2	253,3
Registered unemployed	12,0	12,7	13,2	12,8
Unemployment rate based on labour force survey	n.a.	4,7	5,3	4,5
	2003	2004	2005	2006
WAGES & PRICES				
Average rates of pay				
In money terms	6,2	4,2	5,4	5,7
In real terms	2,0	1,9	2,7	3,1
Average earnings				
In money terms	6,3	4,3	5,4	5,4
In real terms	2,1	1,9	2,8	2,8
% change of consumer prices	4,1	2,3	2,6	2,5

GENERAL GOVERNMENT DEFICIT AS % OF GDP

■ EURO AREA ■ CYPRUS



CURRENT ACCOUNT AS % OF GDP



CYPRUS STOCK EXCHANGE INDICES

Market Indices (base 03.09.2004=1000)

	2003	2004	2005	2006
Main and parallel market index	n.a.	1,012,3	1,704,8	3,900,4
Main market index	n.a.	1,015,7	1,728,0	3,983,3
Parallel market index	n.a.	929,5	1,085,7	1,567,7
Alternative market index	n.a.	849,6	1,037,2	1,789,1
Investment companies index	n.a.	932,3	1,133,5	2,277,7

Sectoral Indices (base 03.09.2004=1000)

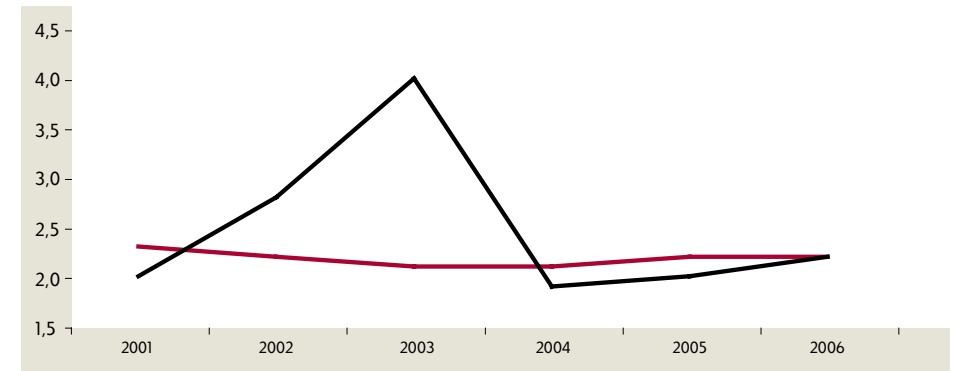
Banks	n.a.	1,029,9	1,852,1	4,395,4
Hotels	n.a.	862,5	1,146,5	1,844,2

FTSE&CSE Indices

FTSE CySE20 (base 30.11.2000=1000)	n.a.	338,5	576,9	1,331,0
FTSE Med 100	n.a.	6,864,7	9,586,1	9,976,2

HARMONISED INDEX OF CONSUMER PRICES (HICP)

■ CYPRUS ■ EURO AREA



IMPORTANT
ADDRESSES
AND
TELEPHONES

2001

2002

2003

2004

2005

2006

2007 EDITION

ADDRESSES & TELEPHONES OVERSEAS

MARFIN INVESTMENT GROUP

Kifisias 24A
151 25 Marousi
Tel: +30 210 6893450, Fax: +30 210 6893550
E-mail: info@marfingroup.gr

MARFIN EGNATIA BANK

Danaïdon 4
546 26 Thessaloniki
Tel: +30 210 8170000, Fax: +30 210 9477523
E-mail: info@marfinegnatia.gr

INVESTMENT BANK OF GREECE

Kifisias 24B
151 25 Marousi
Tel: +30 210 8173000, Fax: +30 210 8173101
E-mail: info@marfinegnatia.gr

LAIKI BANK (AUSTRALIA) LTD

Laiki Bank House, Level 4, 219-223 Castlereagh Str., Sydney NSW 200
Tel: +612 8262 9000, Fax: +612 9283 7723
E-mail: lba_info@laiki.com

LAIKI BANK UK – MARFIN POPULAR BANK PUBLIC CO. LTD

Laiki Bank House, 14 Cavandish Place, London W1G 9DJ
Tel: +4420 7307 8400, Fax: +4420 7307 8404
E-mail: ukenquiries@laiki.com

LAIKI BANK (GUERNSEY) LTD

21 Glategny Esplanade, St. Peter Port, Guernsey, Channel Islands, GY1 4HX
Tel: +44 1481 722988, Fax: +44 1481 722998
E-mail: info@laikibank.gg

LAIKI BANK BELGRADE

22 Dalmatinska Str., 11000 Belgrade
Tel: +381 11 3306406, Fax: +381 11 3241425
E-mail: office@cs.laiki.com

SBM BANK LTD

Parnu mnt. 12, 10148 Tallinn, Estonia
Tel: +372 6802 500, Fax: +372 6802 501
E-mail: info@sbmbank.ee

EGNATIA BANK (ROMANIA) S.A.

90-92 Emanoil Porumbaru Str., Sector 1, Bucharest 011428
Tel: +4021 206 4257 / +402 206 4200, Fax: +4021 206 4282
E-mail: office@egnatia-bank-rom.ro

MARINE TRANSPORT BANK

2, Gagolya Str., Odessa, 65082, Ukraine
Tel: +380 487 869 500, Fax: +380 482 301 302
E-mail: office@mtb.ua

REPRESENTATIVE OFFICES

USA – NEW YORK

450 Park Avenue, 19th Floor, Suite No. 1901, New York, NY 10022, U.S.A.
Tel: +1212 319 3515, Fax: +1212 319 3516
E-mail: Laiki.ny@laiki.com

CANADA – TORONTO

484, Danforth Ave., 2nd Floor, Toronto, Ontario M4K 1P6
Tel: +1416 466 8180, Fax: +1416 466 9609
E-mail: Laiki.toronto@laiki.com, info@laiki.ca

CANADA – MONTREAL

5724, Ave. du Parc, Montreal, Quebec H2V 4H1
Tel: +1514 495 8118, Fax: +1514 495 9746
E-mail: Laiki.montreal@bellnet.ca

SOUTH AFRICA – JOHANNESBURG

84 Concorde East, Bedfordview, 2008 Johannesburg, Gauteng, South Africa
Postal Address: Postnet Suite No. 254, Private Bag X782, Bedford View, 2008
Johannesburg, Gauteng, South Africa
Tel: +27 114568780, Fax: +27 114501811
E-mail: pbanksa@iafrica.com

RUSSIA – MOSCOW

Office 1005A, 10th Floor, World Trade Center, Entrance No. 3,
Krasnoprsnenskaya Nab. 12, Moscow 123610
Tel: +7495 9670185, Fax: +7495 9670186
E-mail: popularbank@wtt.ru

SOURCES:

Statistical Service of Cyprus
Ministry of Finance
Cyprus Stock Exchange
Eurostat
European Central Bank

PUBLISHED by:

Economic Research & Planning
Tel: 22 811311, Fax: 22 811492
E-mail: laikiebank@laiki.com
General supervision: Corporate Affairs
ISSN: 1450-4502

